

USER'S MANUAL

contents

1 GUIDE	1
1.1 Important Safety Instructions.....	1
1.2 Unpacking.....	2
1.3 PRODUCT OVERVIEW & ILLUSTRATION	3
1.4 INSTALLATION OF METER	6
2 OUTLINE	6
3. THE MENU OSD INSTRUCTION.....	7
3.1 Satellite Find	7
3.1.1 Satellite.....	8
3.1.2 Local Frequency	8
3.1.3 Transponder	9
3.1.4 Frequency.....	9
3.1.5 Symbrate.....	9
3.1.6 Polarity	10
3.1.7 TONE	10
3.1.8 Beep Tone.....	10
3.1.9 DiSEqC Mode.....	10
3.1.10 DisEqc type & Input	10
3.1.0.1 Quick Search.....	10
3.2 Spectrum.....	13
3.3 Channel	13
3.3.1 Program Info.....	14
3.3.2 Program List	14
3.3.3EPG	17
3.4 SAT/TP Manager	17
3.4.1 Satellite Setting.....	17
3.4.2 Auto Scan.....	21
3.4.3 Transponder.....	22

3.5 Multimedia.....	24
3.6 System Setting.....	26
4 Technical Specification	29
5 Trouble Shooting.....	31

1 GUIDE

1.1 Important Safety Instructions

Thank you for choosing our product. Before installation, we would like to remind you some notes, which is very important for operating safely and properly, as follows:

- Be sure to read this user manual before starting your operation.
- You must install the dish with correct direction and angle. If the dish is not working properly, contact your local dealer.
- When the unit is suddenly moved to a hot area from a cold area, it may cause some problems. In that case, turn off the power, and turn on again after 1-2 hours.
- Keep meter placed in clean space with sufficient ventilation.
- Do not cover the meter with or place it on a unit that emits heat.
- Clean the case by a soft cloth with a little washing liquid.
- Do not remove the cover.
- Do not let the unit exposed to extreme heat, cold or humid conditions.
- No liquids or any other materials to come inside of the unit.

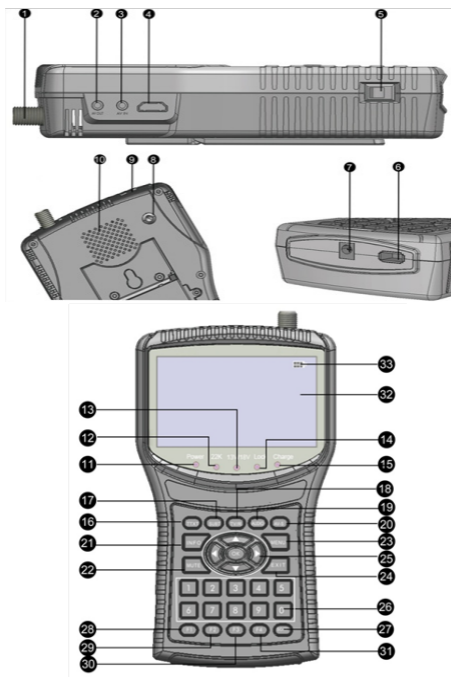
WARNING:All instructions are subject to the latest version of software without prior notice if any new functions are added to the equipment.

1.2 Unpacking


Open the package and make sure it includes all below items, if any missing, please contact the reseller for replacement.

- 1.Digital SatelliteMeter
- 2.User's manual
- 3.AV cable
- 4.Car charger cable
- 5.Power Adaptor
- 6.Strap of carrying case
- 7.DC 12V tieline

1.3 PRODUCT OVERVIEW& ILLUSTRATION



NO	Description	FUNCTION
1	LNB IN	Connect to satellite antenna cable
2	AV OUT	Connect to AV port for TV
3	AV IN	Connect to AV port for meter
4	HDMI	Use HDMI cable to connect for TV
5	Power witch	Turn on/off meter
6	USB Port	Connect to USB memory
7	DC Slot	Connect to Adaptor Input
8	Torch LED	Night lighting
9	DC 12V OUTPUT	DC 12V output for extern equipment
10	Speaker	Speaker Integrated
11	Power	Power indicator light
12	22KHZ	22Khz indicator light
13	13V/18V	Vertical /Horizontal polarization voltage output light
14	LOCK	Signal lock indicator ligh
15	Charger (Note1)	Charger indicator light
16	Red & TTX	Red KEY & Teletext interface
17	Green & SUBT	Green key & Subtitle interface
18	Orange & TV/R	Orange key & TV and radio switch
19	BLUE & AUDIO	Blue key & Audio interface
20	AV-S	If we connect AV IN; switch AV in/out for LCD and speaker
21	INFO	To display channel status or various program information of current channel
22	MUTE	MUTE

23	MENU	Show the main menu on the screen or jump back to previous menu in sub-menu setting conditions
24	EXIT	Escape from present menu and save the settings
25	NEVIGATION KEY	Volume Control or move cursor, channel or change, confirm etc
26	0-9	Select channels or enter programming
27	SCAN	'Quick Search' menu shortcut key
28	F1	Auxiliary function key
29	F2	Auxiliary function key
30	F3	Auxiliary function key
31	F4	Auxiliary function key
32	LCD	TFT LCD Screen
33		When power on the meter ,displays the battery level

Note1:When the adapter insert dc slot, Charging indicator is often bright, when the batteries charged sufficient, the charge indicator is go out.

1.4 INSTALLATION OF METE



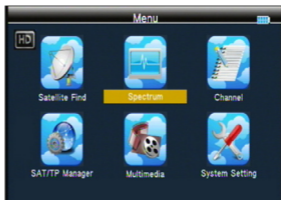
2. OUTLINE

- 4.3 Inch High Definition TFT LCD Screen
- Fully DVB-S/DVB-S2, MPEG-2/MPEG4 compliant
- Constellation analyzer
- Spectrum analyzer
- Supports scan of Auto ,Blind, Manual or NIT
- Sound and Light Alarm for Locking Signal
- Auto Calculate Angle of AZ ,EL
- Supports DISEQC 1.0/1.1/1.2 ,0/22khz Tone
- Speaker Integrated
- Support both AV out and AV in
- LNB short protect
- 7.4V/3000mAh Li-Ion Battery Included
- Software upgrade via USB port
- Easy to carry

3. THE MENU OSD INSTRUCTION

If you have installed and connected the cables of the meter, pressing MENU key to display the Main Menu.

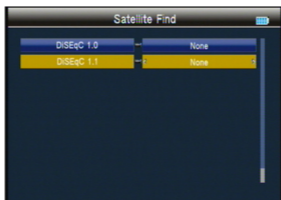
- Satellite Find
- Spectrum
- Channel
- Sat/TP Manager
- Multimedia
- System Setting



Press the keys of ▲▼◀▶ to move the cursor up or down in the menu interface, then use OK key to confirm a selection.

3.1 Satellite Find

Satellite Find	
Satellite	C-Rascom 19
Local Frequency	5150
Transponder	001
Frequency	04000
Symbol Rate	28125
Polarity	H
Tone	ON
Beep Tone	OFF
DISEqC Mode	DiseqC 1.0/1.1



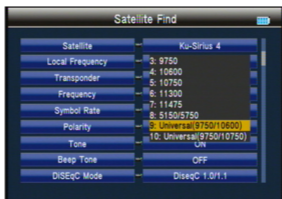
3.1.1 Satellite

Press ◀▶ key into the satellite list. Use ▲▼ key to move the cursor, then press OK key to select the satellite of you want.



3.1.2 Local Frequency

Press ◀▶ key into the LNB list. Use ▲▼ key to move the cursor then press OK key to select the LNB of you want.



3.1.3 Transponder

Press ◀▶ key into the TP list. Use ▲▼ key to move the cursor then press OK key to select the satellite of you want.



3.1.4 Frequency

Frequency of the current transport, Input the value by using the numeric keys.

3.1.5 Symbrate

Symbol rate of the current transport, Input the value by using the nu-meric keys.

3.1.6 Polarity

Press ◀▶ key to change Vertical or horizontal of polarization.

3.1.7 TONE

Press ◀▶ key to on or off 2kHz TONE Switch.

3.1.8 Beep Tone

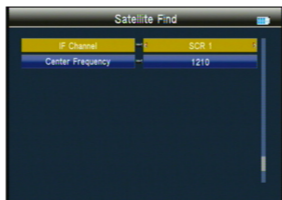
Press ◀▶ key to Switch beep tone. If we open the beep tone; when we into the search screen, the beep of lock alarm will open.

3.1.9 DiSEqC Mode

Press ◀▶ key to set the port type diseqc 1.0/1.1 or unicable

3.1.10 DisEqc type & Input

If we select diseqc 1.0/1.1; we can press ◀▶ key to set the port number. If select unicable, we can press ◀▶ to select IF Channel; and use number key to input center Frequency.

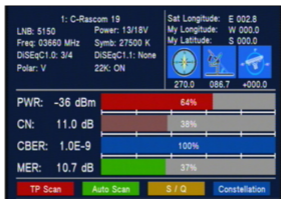


3.1.0.1 Quick Search

In the satellite Find interface, pressing OK key will into the quick search.

If you set the local Longitude and Latitude Under the system

setting, the angle of LNB, the orientation and elevation of antenna, all will be display on the screen.



Constellation: Press blue key into the constellation.



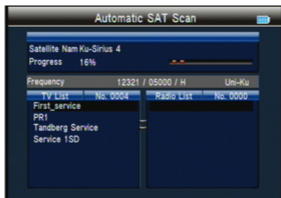
S/Q: Press the orange key to enlarge showing of the signal strength and quality



Scan : Press the red key to search the current TP.



Auto : Press the green key to auto blind search the current satellite.



3.2 Spectrum

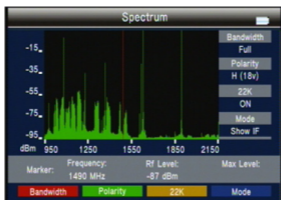
Press ◀▶ key to change Frequency;

Press red key to change bandwidth;

Press green key to change Vertical or horizontal of polarization;

Press orange key to switch 22K on/off.

Press blue key to change mode Show IF or RF.



3.3 Channel

■ Program Info

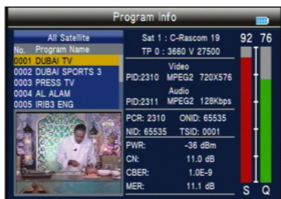
■ Program List

■ EPG



3.3.1 Program Info

In the Program Info we can check the info of the current TV.



3.3.2 Program List



1)Sort

Press red key into the sort list. Use ▲▼ key to move the cursor, then press OK key to select the sort type of we want; then press ok key to confirm or move the cursor to “x” press ok key to cancel.



2) Lock

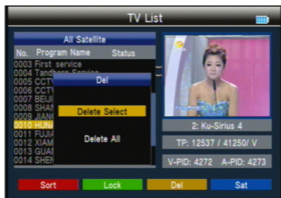
Press ▲▼ key to the program that we want lock or unlock, then press green key to lock or unlock the program. When we deal with all the program need to be processed, press menu key to then press ok key to confirm the operation or select “x”; press ok key to cancel.



3) Del

Press orange key to select “Delete Select” or “Delete ALL”. Press ▲▼ key to select the program that we want to delete, then

press orange key to label. When we deal with all the program need to be processed, press menu key to then press ok key to confirm the operation or select “x”; press ok key to cancel.



4)SAT

Press blue key then press ◀▶ key to select program list of the single satellite, or all satellite.



3.3.3 EPG

Press ▲▼ key to change program. If the current program has EPG info, it will appear on the right side of the window. Press ◀▶ key to change the day of the EPG info.



3.4 SAT/TP Manager

■ Satellite Setting

■ Auto Scan

■ Transponder



3.4.1 Satellite Setting

In the all Satellites Setting

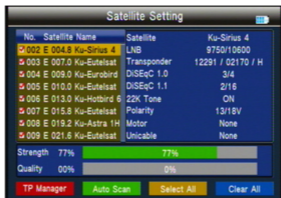
Press blue key to clear all selecte of satellite.

Press orange key to select all satellites.

Press green key into auto scan interface.

Press red key into the Transponder interface.

Press ▲▼ key to move the cursor, then press ok key to change the satellite select or unselect.



Press ◀▶ to set the single satellite setting.

In the setting interface:

1, TP Manager: press red key into TP manager.

2, Auto Scan: press green key into auto scan..

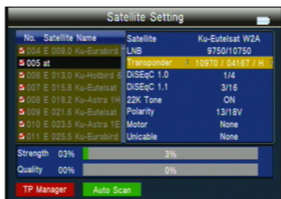
3, LNB: Press ◀▶ key then change the LNB frequency.

4, Transponder: Press ◀▶ key then change the current TP.

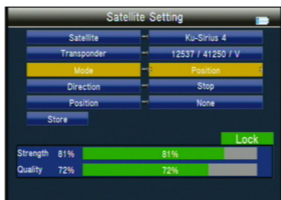
5, DiSEqC1.0: Press ◀▶ key to change the DiSEqC port.

6, DiSEqC1.1: Press ◀▶ key to change the DiSEqC port.

7, Motor: Press ◀▶ key to change the DiSEqC port.



If we select DiSEqC1.2/USALS, Press OK key into the motor interface.



Transponder: Press ok key to change the current tp.

Mode: A, Position

A1 Direction: Press ◀▶ key to move direction to west or east.

A2 Position: set the satellite save position.

A3 Store: save the satellite position to set of A2.

Mode: B, Drive to Zero; move the cursor to GO, then press OK

key, the motor will go to zero.

Mode: C, Drive to stored position; move the cursor to GO, then press OK key, the motor will go to position of we saving in mode A Position.

Mode: D, Drive to Satellite; move the cursor to GO, then press OK key, the motor will go to position of auto calculate.

D1 Direction: Press ◀▶ key to move direction to west or east.

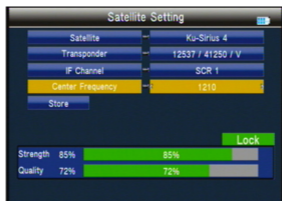
Mode: E, Set East Limit or Set west Limit, limit the motor move to east or to west.

E1 Direction: Press ◀▶ key to move direction to west or east.

E2 Store: save the satellite position of A2

Mode: F, Set Limit enable or disable, set the limit enable or disable,

8, Unicable: Press ◀▶ key to select Unicable then press OK key into the Unicable setting.



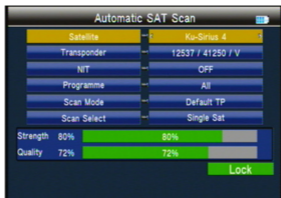
Transponder: press ◀▶ key to change the current TP.

IF Channel: press ◀▶ key to change SCR channel.

Center Frequency: use value key to input number.

Store: store the setting.

3.4.2 Auto Scan



Satellite : Press ◀▶ key into the satellite list. Use ▲▼ key to move the cursor, then press OK key to select the satellite of you want.

Transponder: press ◀▶ key into the TP list. Use ▲▼ key to move the cursor then press OK key to select the satellite of you want.

NIT: press ◀▶ key to switch network searcher on/off

Program: TV search type ALL/FTA

Scan Mode: scan mode select, we can select Default TP / One TP/Blind.

Scan Select: scan all satellites of selected or the current satellite.

3.4.3 Transponder

Press ▲▼ key to select the current satellite.



1) Press red key to edit satellite

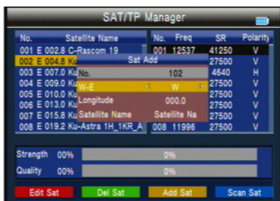
W-E: switch the satellite longitude west or east.

Longitude; use number key input value.

Satellite Name: press ok will open the keyboard; use the direction key input satellite name.



- 2) Press green key to delete satellite, then press ok key to confirm or press menu key to cancel.
- 3) Press orange key to add a satellite.



NO.: Satellite number.

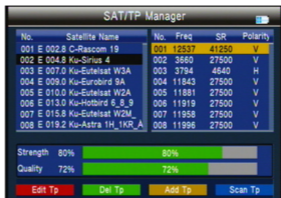
W-E: switch the satellite longitude west or east.

Longitude; use number key input value.

Satellite Name: press ok will open the keyboard; use the direction key input satellite name.

4) Press blue key into auto scan interface.

Press ◀▶ key to TP manager.



1) Press red key to edit TP

NO.: TP number.

Frequency: use number key input value.

Symbol Rate: use number key input value.

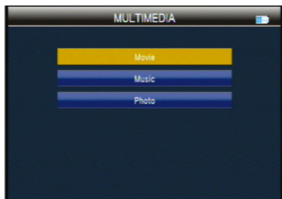
Polarity: Press ◀▶ to change polarity

2) Press green key to delete TP, then press ok key to confirm or press menu key to cancel.

3) Press orange key to add a TP ; Please refer to TP edit operations.

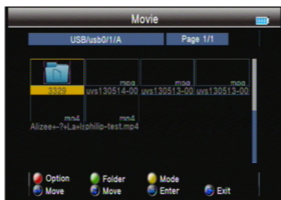
4) Press blue key into TP scan interface.

3.5 Multimedia



Will need to play the files in the USB stick and insert it into the machine.

● Movie



- 1) Press red key to option the mode of play files and text encode; then press menu key return.
- 2) Press green key to Change the folder File view to detailed list.
- 3) Press orange key to change mode to big Icon browsing.
- 4) Press the arrow keys to move the cursor, then press ok key to enter the file.

In the play interface:

F1 Key: normal play.

F2 Key: pause.

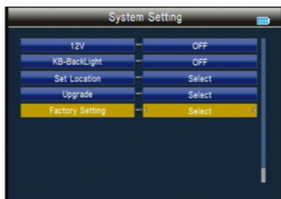
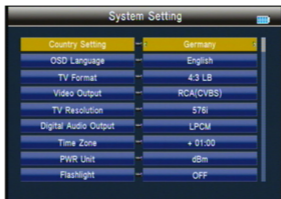
F3 Key: fast backward; press F1 key return.

F4 Key: fast forward; press F1 key return.

● Music& Photo

Please refer to the Movie operating.

3.6 System Setting



Country Setting

Press ◀▶ key to change the country

OSD Language

Press ◀▶ key to change the OSD Language.

TV Format

Press ◀▶ key to change the TV Format.

Video Output

If we connect HDMI interface, we can press ◀▶ key.

TV Resolution

On the basis of the Video Output choice, we can press ◀▶ key to change the TV resolution.

Digital Audio Output

Press ◀▶ key to change the LPCM or RAW format.

Time Zone

Press ◀▶ key to change the Time Zone.

PWR Unit

Press ◀▶ key to change the PWR unit.

Flashlight

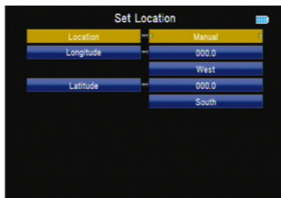
Press ◀▶ key to switch Flashlight on/off.

12V

Press ◀▶ key to switch DC 12V output on/off.

KB-BackLight

Press ◀▶ key to switch delay time of back light.

Set Location

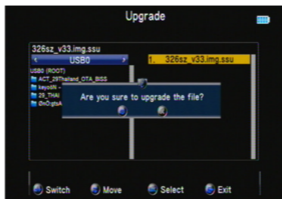
Press ◀▶ or ok key to set location longitude or latitude
Location: we can press ◀▶ to change the city, then auto

Longitude: we can use number key input value then select west or east.

Latitude: we can use number key input value then select south or north..

● Upgrade

Will update the file into the U disk; then insert the machine; press ok key to update interface, use the direction key to select update file. Press ok key to update.



Warning: During the upgrade processing, do not power off or pull out the U disk; otherwise it will damage the machine software, can not boot.

● Factory Setting

Press ◀▶ key, then press ok key to confirm factory.

NOTE: if you set factory, all the user settings and the database will be reset.

● Version info

Press info key will appear version info

4. Technical Specification

TRANSMISSION STANDARDS	
DVB-S2/S, MPEG-2, MPEG-4, H.264	
SATELLITE INPUT/DEMODULATION	
Connector Type	F Type
Input Frequency	950 to 2150 MHz
Signal Input Level	- 65 to -25 dBm
Band Switch Control	22KHz
LNB Supply	13V/18V, IMax 400mA
Demodulation Type	QPSK, 8PSK
Symbol Rate	2<Rs<45Mband(SCPC/MCPC)
LCD FEATURES	
LCD Type	TFT TRANSMISSIVE
Number of Dots	480(RGB) x272
Active area (WxH)	95.04x53.86 mm ²
AV output interface	
Connector Type	3.5 mm jack
Video Output	CVBS
Audio output	Stereo Audio L/R output
HDMI output connector	
Format	HDMI 1.3
AV input interface	
Connector Type	3.5 mm jack
Video input	CVBS,
Audio input	Stereo Audio L/R input
AUDIO/VIDEO PROCESSING	
Video decompression	MPEG-2 MP@HL, MPEG-1 Decoding, MPEG-4 ASP@L5 HD resolution, H.264 MP&HP@L4, HW JPEG decoding

Resolving rate	PAL-25 frame@720*576,NTSC-30 frame@720*480,
Signal compatibility	Support conversion for different video formats
Video Format	4:3,16:9,By Pan & Scan and Letter Box conversion
Audio decompression	MPEG-1 Layer I/II , MPEG-2 Layer I/II,
Audio output mode	Stereo, Mono,R/L
DATA SERVICE PORT	
Connector	USB
Data protocol	USB2.0 interface
File management system	NTFS,FAT32,FAT16
file format	wma,mp3,mp4,avi,jpg,jpeg,bmp,img
MICROPROCESSOR	
Microprocessor	78326SZ
Clock Frequency	500MHz
SDRAM Memory	DDR2 512Mbit
Power SUPPLY	
Li-Ion Battery	7.4V/3000mAh
Adapter	OUTPUT :DC12V/1.5A, INTUPT :100-240VAC 50/60Hz
Power consumption	Max. 10W
PHYSICAL CHARACTERISTICS	
Size (W x D x H)	125x205x4.5(cm ³)
Net Weight	0.66kg

5 .Trouble Shooting

Problem	Possible Causes	What To Do
No display light up	Power switch is not on Run out of batteries	Check to make sure power on. Even on adapter
No sound or picture, but the front panel power light is ON.	AV IN jack insert, but no video input	Pull out AV IN cable
No sound or picture	The satellite dish is not pointing at the satellite.	Adjust the dish. Check the Signal Level in the Antenna Setup Menu
Bad picture/ Blocking Error	No signal or weak signal	Check the cable connections. LNB and other equipment connected between the LNB and the meter and adjust the dish.
	The satellite dish in not pointing at the satellite	Adjust the dish.
	Signal is too strong	Connect a signal attenuator to the LNB input
	Satellite dish is too small	Change to a larger dish
	LNB noise factor too high.	Change to an LNB with lower noise factor
	The LNB is faulty.	Change the LNB

AV out No picture(Video)	The system is connected by SCART cable and TV is not in AV mode.	Check the UHF channel fixed in your system and tune the UHF properly.
The key is not working.	Out of battery	Even on adapter
	Key blocks	make sure no blocks between the front panel

Note: If you still cannot resolve the problem with above reference. Please contact the local dealer or their after-sales service center.



USER'S MANUAL